

PG24SG

How to take out the heat deflector
for cleaning and/or changing out

Warning: Before you begin
make sure the item is
unplugged and not turned on



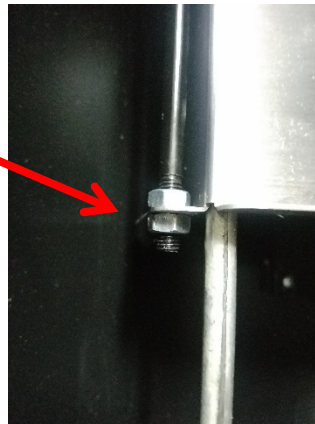


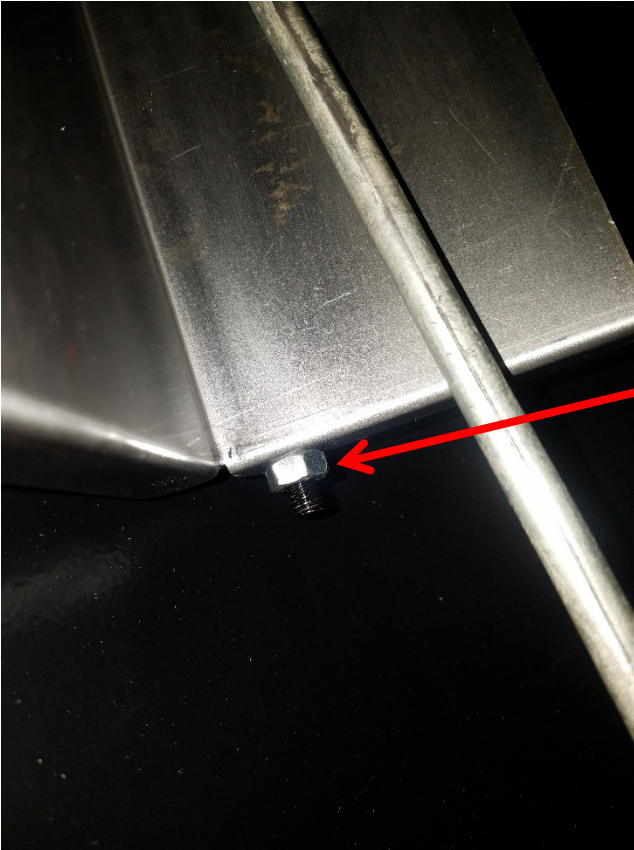
Take out the warming rack,
cooking grate, and drip tray



Slide the
heat
deflector to
the left

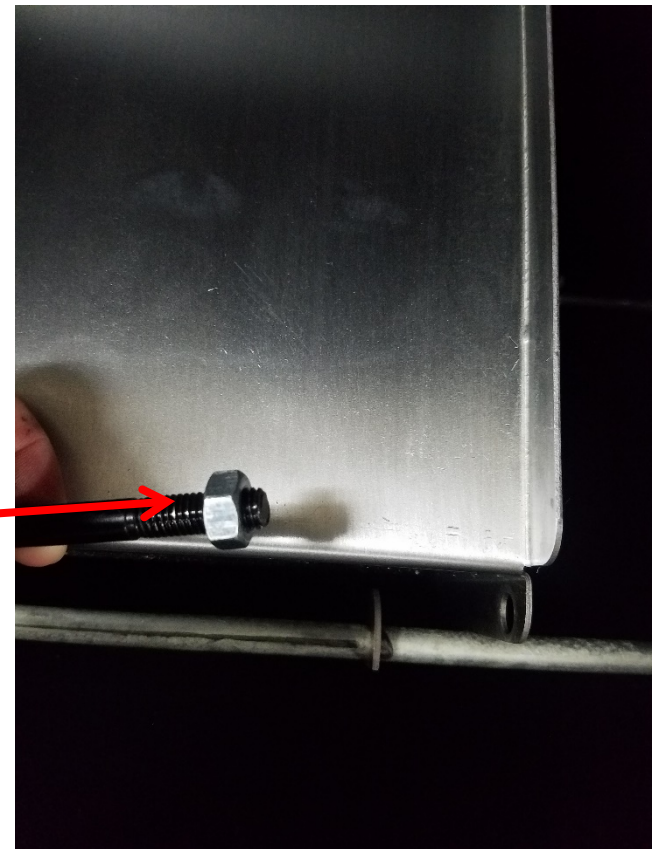
Lift up the deflector. This will
make it easier to undo the
bolt that is connecting it to
the rod





You will want to undo this nut first. By lifting up the heat deflector, it will make it easier to get to the bolt.

Once you get that first nut off, you can pull the heat deflector forward to get to the other nut. Once you get the second nut off, you can pull the heat deflector off of the rod.





Once you pull the heat deflector off the rod, you can clean out the bottom of the pellet grill and/or change out the part.

NOTE to reassemble you would just need to follow the instructions backwards.



If after troubleshooting with this manual, if you are still experiencing problems, please contact our customer service department. Our agents will be happy to help. You can contact them at
1-800-650-2433

Note: The Manufacturer is not liable for any replacement parts, equipment, and/or injury due to improper installation or modification.