

How convert the Flat Top Grills to Natural Gas.



Warning: Before you begin make sure the item is not hooked up to propane

NGKIT, which is our Natural Gas Conversion Kit, is needed to convert any Low Pressure Stove, Smoke Vault, or Fire Pit.

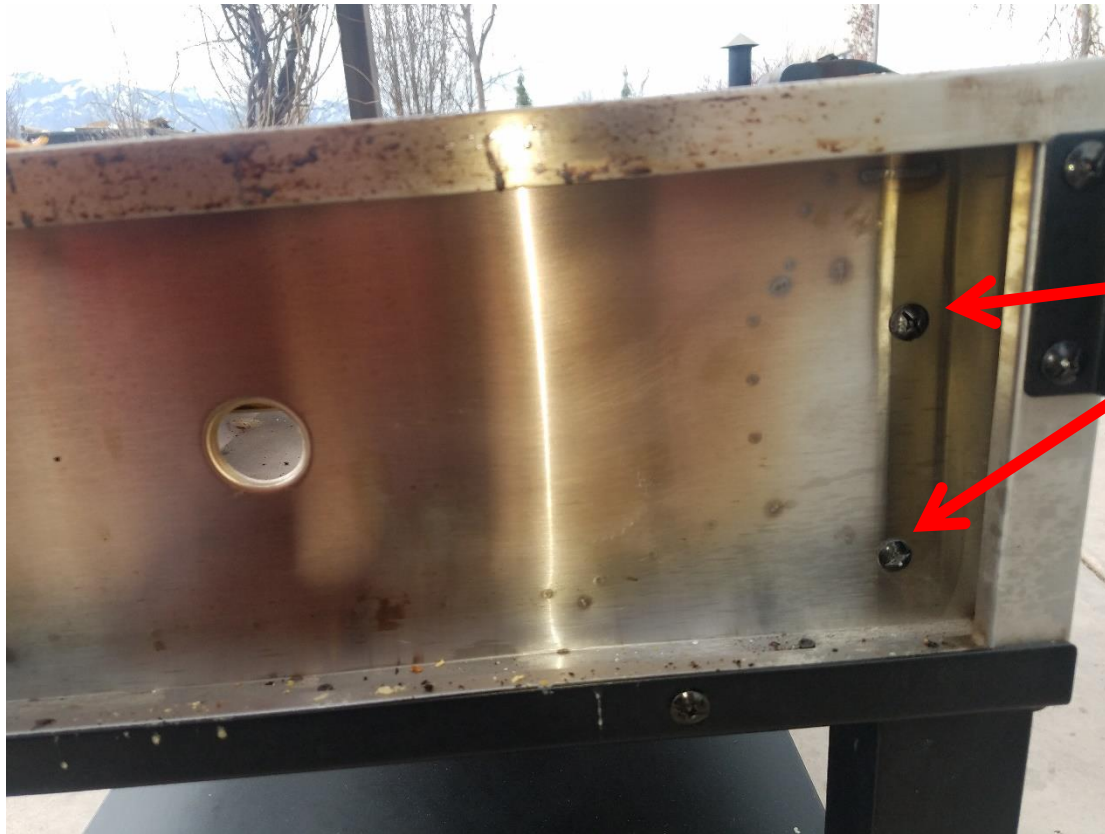




You will want to remove all the knobs

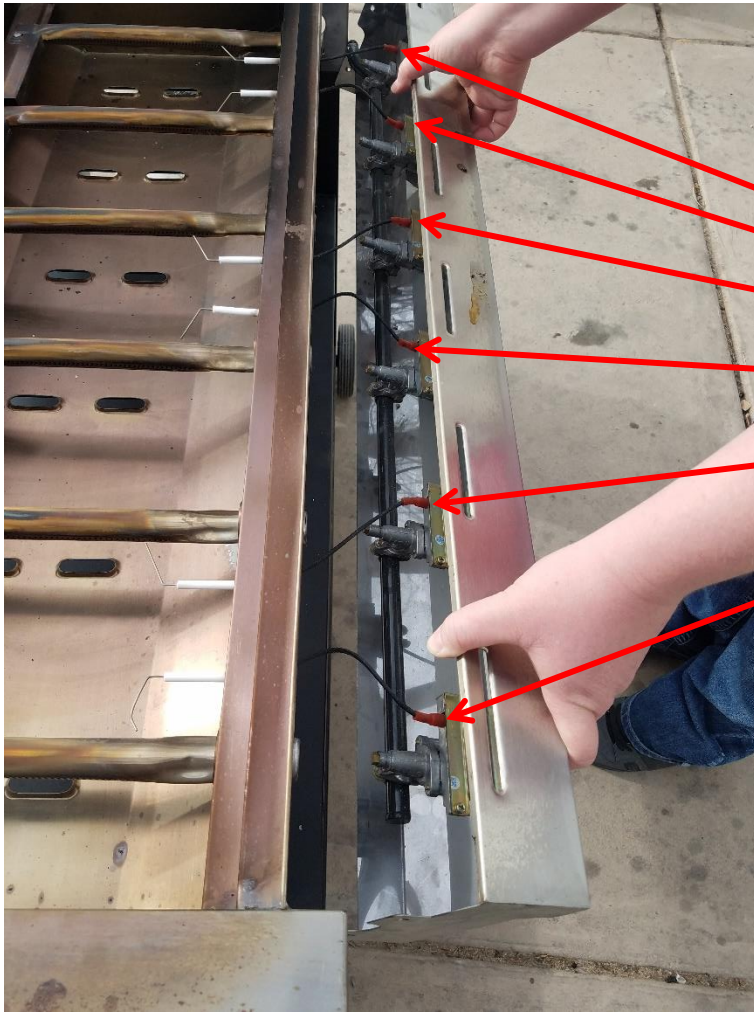
First you will have to take off the griddle. After that fold down and take off side shelves





Once you take off the shelf, you will notice 2 screws. Take out these screws on both sides.

Please Note: The next step may require 2 people



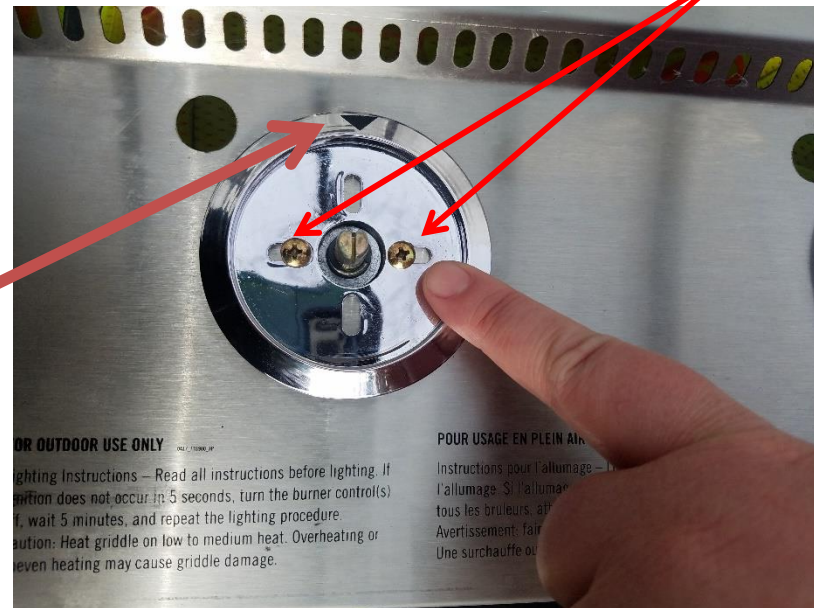
You will need to disconnect each igniter wire before you can pull off the cover that will house the manifold and valves.

Please Note: The this step may require 2 people



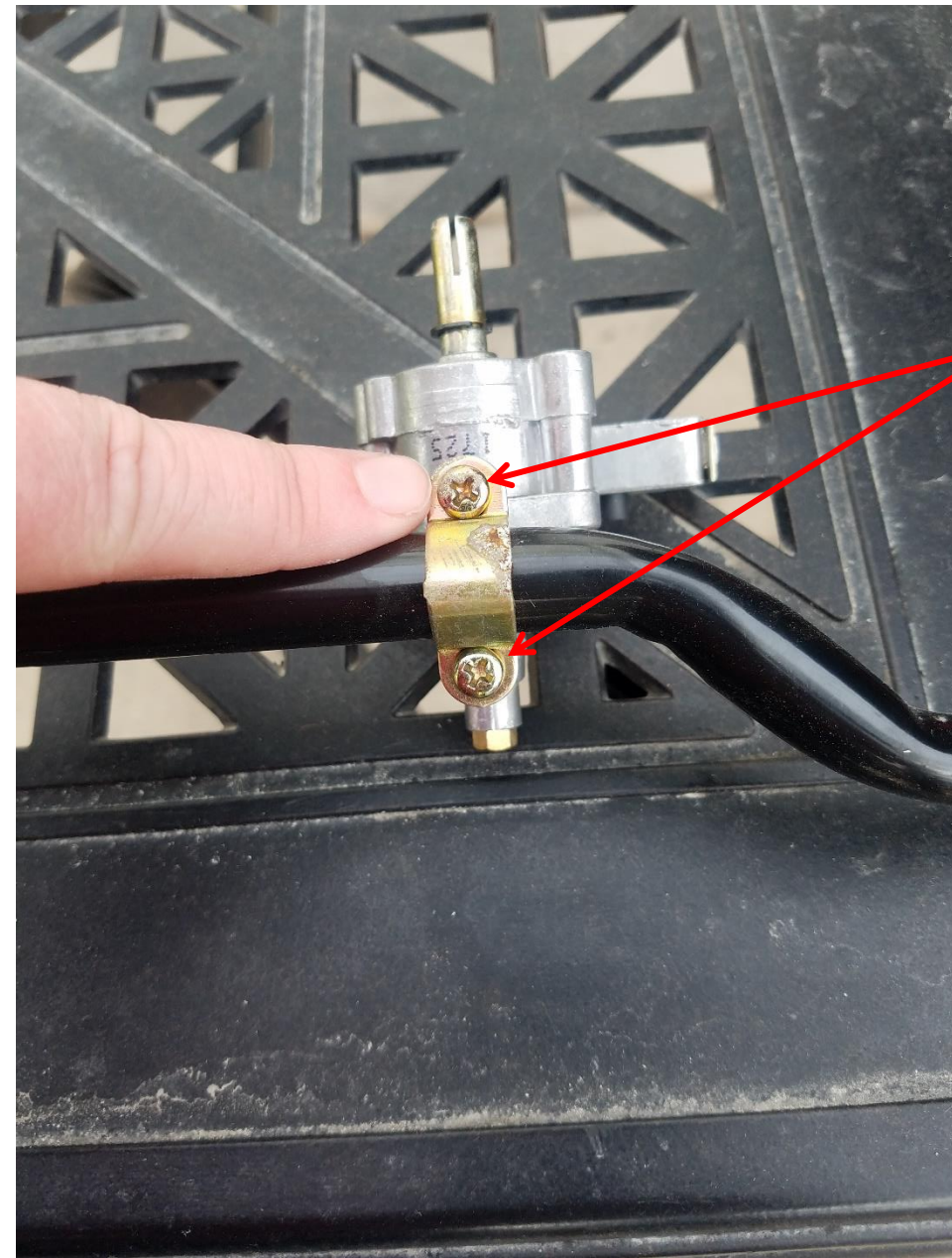
When you get it disconnected from the main body, flip the silver faceplate down and it will show you the manifold and valves.

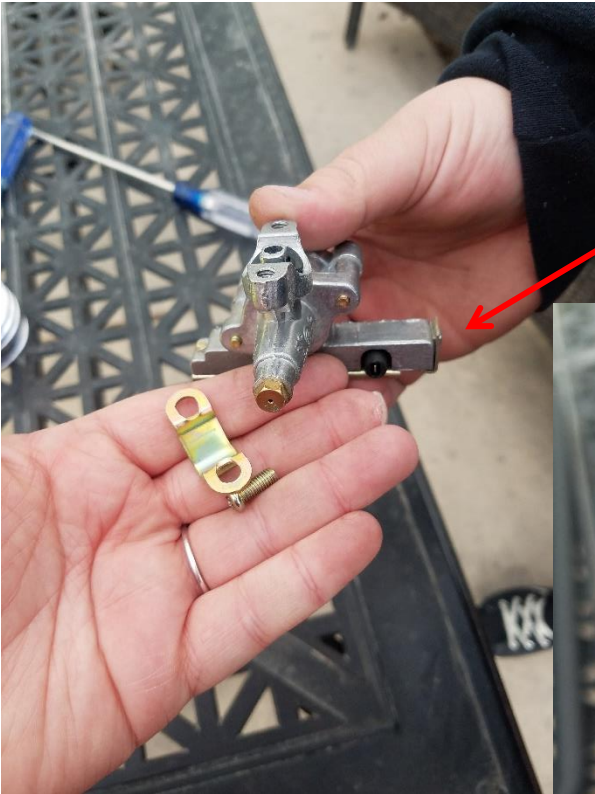
To get the valve and manifold off of the face plate, flip it back over and you will see a bezel and 2 screws for each valve. Take out these screws and place off the side with the bezel.




Please Note: When reassembling, make sure the black triangle on the bezel is at the top

Once you have the manifold and valves disconnected from the face plate, you can remove the valve from the manifold. You will just need to remove these two screws from the connecting bracket





With the screws removed it will free the valve from the manifold.



To convert to natural gas you will want to drill out this orifice with a #54 drill bit for the FTG900, FTG600, and the FTG475. For the FTG475LC it will be a #52 drill bit.

If after troubleshooting with this manual, if you are still experiencing problems, please contact our customer service department. Our agents will be happy to help. You can contact them at
1-800-650-2433

Note: The Manufacturer is not liable for any replacement parts, equipment, and/or injury due to improper installation or modification.