

How to change a Valve\Ingiter in the PZOVEN



Warning: Before you begin
make sure the item is removed
from the propane tank.

The first thing is to take all the screws out of the back. They will be all around the back side. There is 17 total. Please note that there are a couple different type of screws and you may need to make piles that are labeled.

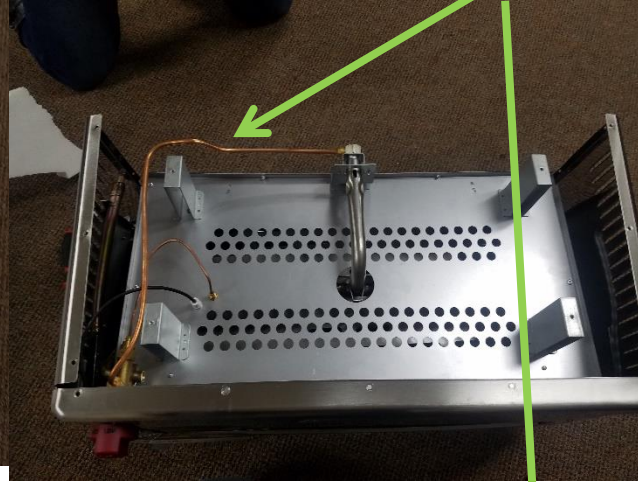


After you get the back of the oven off, you will then want to take the bottom of it off as well. Remove the ones along the sides, there are 11 total around the outside.

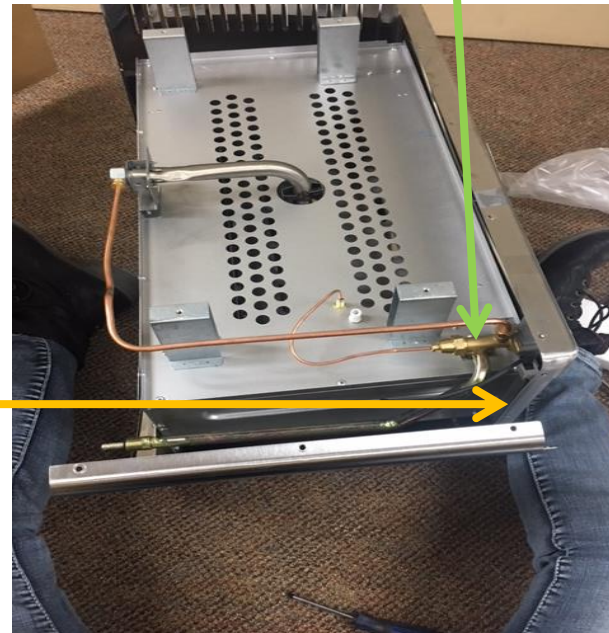


There are 4 screws in the middle that you will need to remove as well. Again, these screws are different than the ones around the outside piece of the bottom. (The feet do not need to come off)

Pull out the bottom piece and you can now see the gas line and valve



**Note - If you need more room to work with, you can take out the screws on the side with the valve.





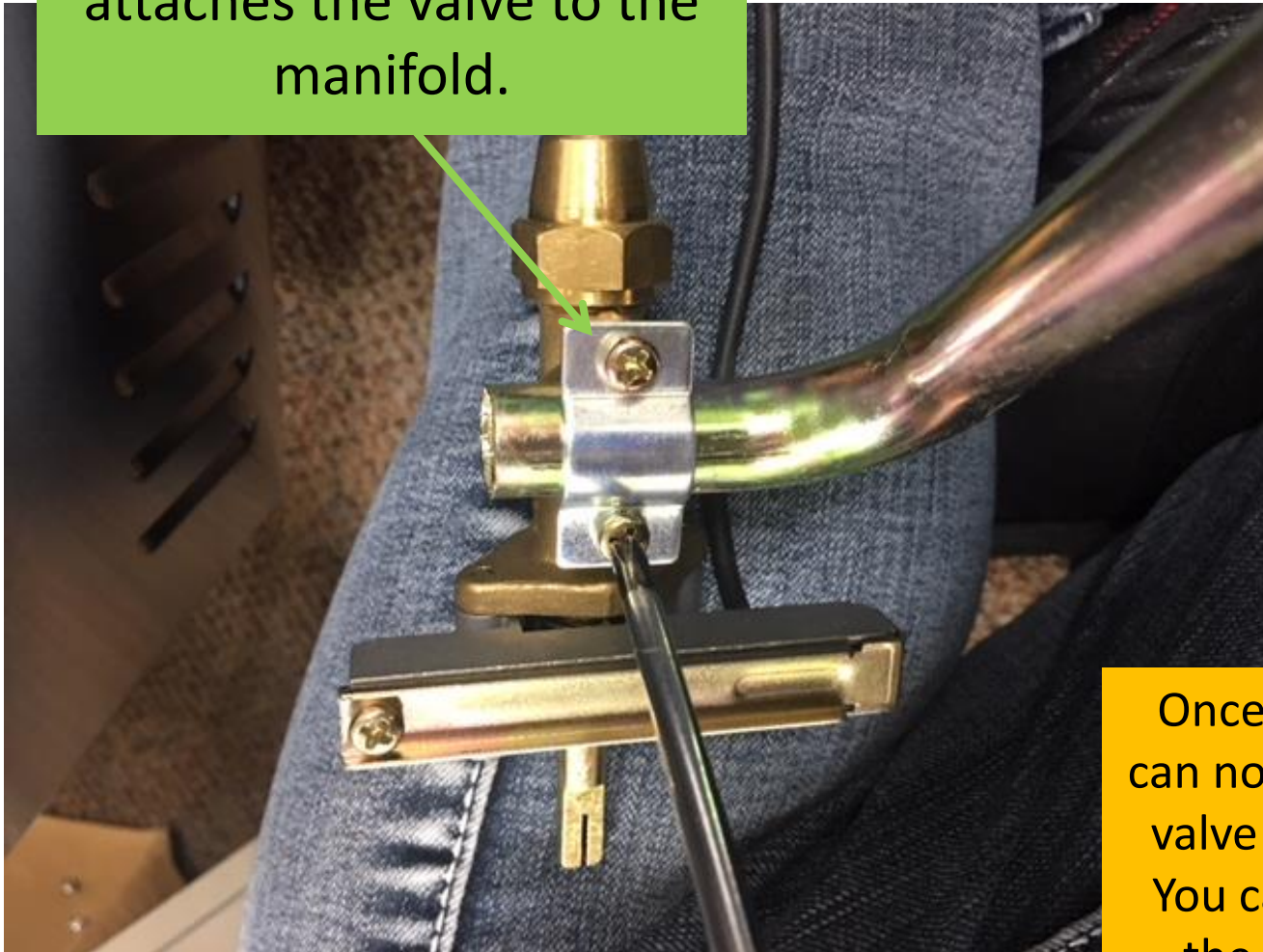
You will then want to disconnect the gas line on the valve, that goes to the burner.

After you do that, you will want to disconnect the manifold from the oven. It is 2 screws that attach this on. This will allow you to take the manifold and valve off.

****Note – Before you pull out the manifold and valve, make sure you have taken the knob off of the valve as well. This will just pull off, there is nothing attaching it to the valve.**



Once you take the Manifold and valve out of the oven. You will need to take off the bracket that attaches the valve to the manifold.



Once the bracket is off, you can now replace with the new valve and then re assemble. You can do this by following the directions in reverse.

If after troubleshooting with this manual you are still experiencing problems, please contact our customer service department. Our agents are more than happy to troubleshoot further, to insure you get the help you need. You can contact them at 1-800-650-2433.

Note: The Manufacture is not liable for any replacement parts, equipment, and/or injury due to improper installation or modification.