

How to change a Thermocouple in the PZOVEN



Warning: Before you begin
make sure the item is removed
from the propane tank.

The first thing is to take all the screws out of the back. They will be all around the back side. There is 17 total. Please note that there are a couple different type of screws and you may need to make piles that are labeled.



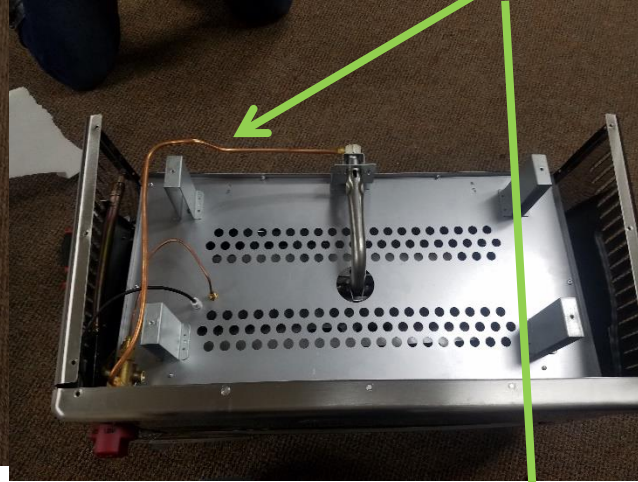
After you get the back of the oven off, you will then want to take the bottom of it off as well. Remove the ones along the sides, there are 11 total around the outside.



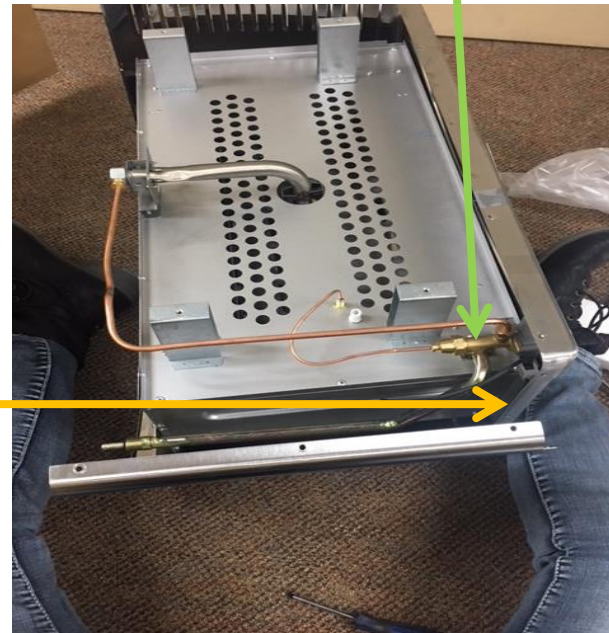
There are 4 screws in the middle that you will need to remove as well. Again, these screws are different than the ones around the outside piece of the bottom. (The feet do not need to come off)

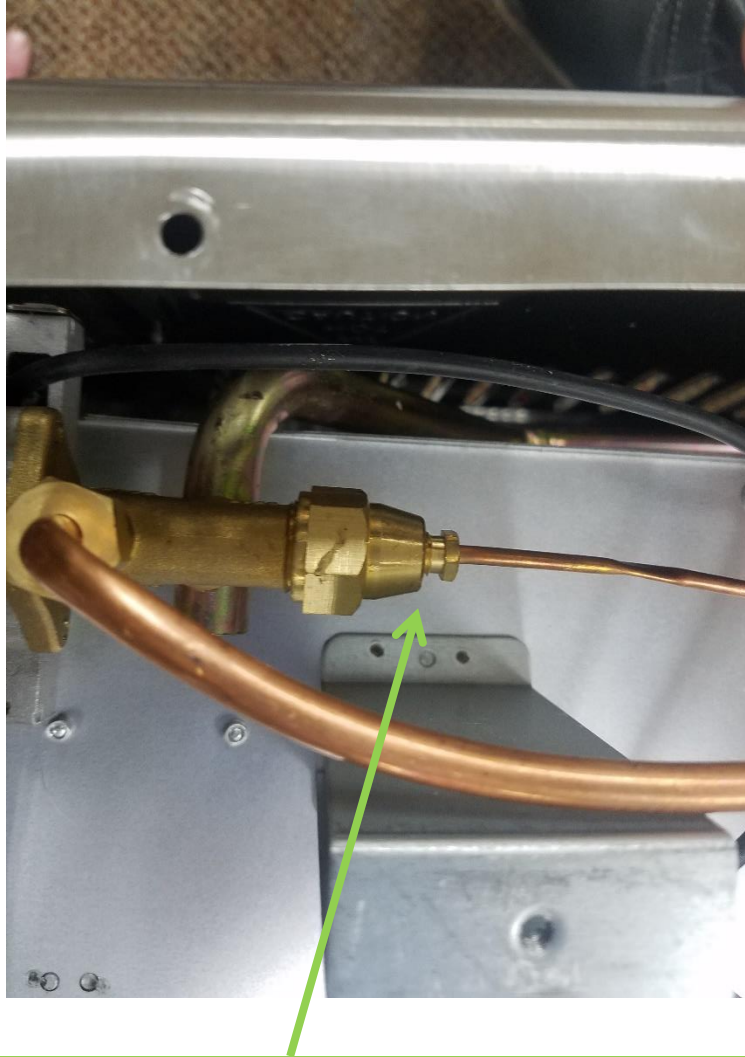


Pull out the bottom piece and
you can now see the gas line
and valve



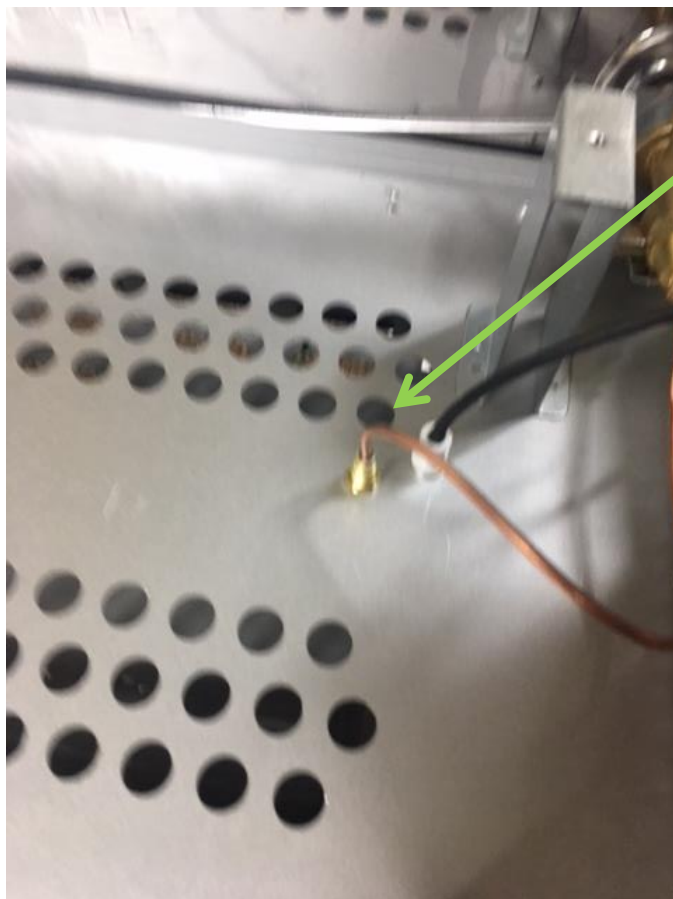
****Note - If you need more
room to work with, you can
take out the screws on the
side with the valve.**





You will then want to disconnect the thermocouple from the valve.

You will have to loosen and take out the thermocouple from the burner area as well.



Once you disconnect the thermocouple you can place the new one in and re assemble. You can do this by following the directions in reverse.

If after troubleshooting with this manual you are still experiencing problems, please contact our customer service department. Our agents are more than happy to troubleshoot further, to insure you get the help you need. You can contact them at 1-800-650-2433.

Note: The Manufacture is not liable for any replacement parts, equipment, and/or injury due to improper installation or modification.